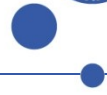




Faculty of Humanities



# East Anglia and Jutland

– a comparative place-name study across the North Sea

**Peder Gammeltoft**  
Name Research Section  
Dept. of Nordic Research  
University of Copenhagen

Norwich 28. March 2015  
Dias 1



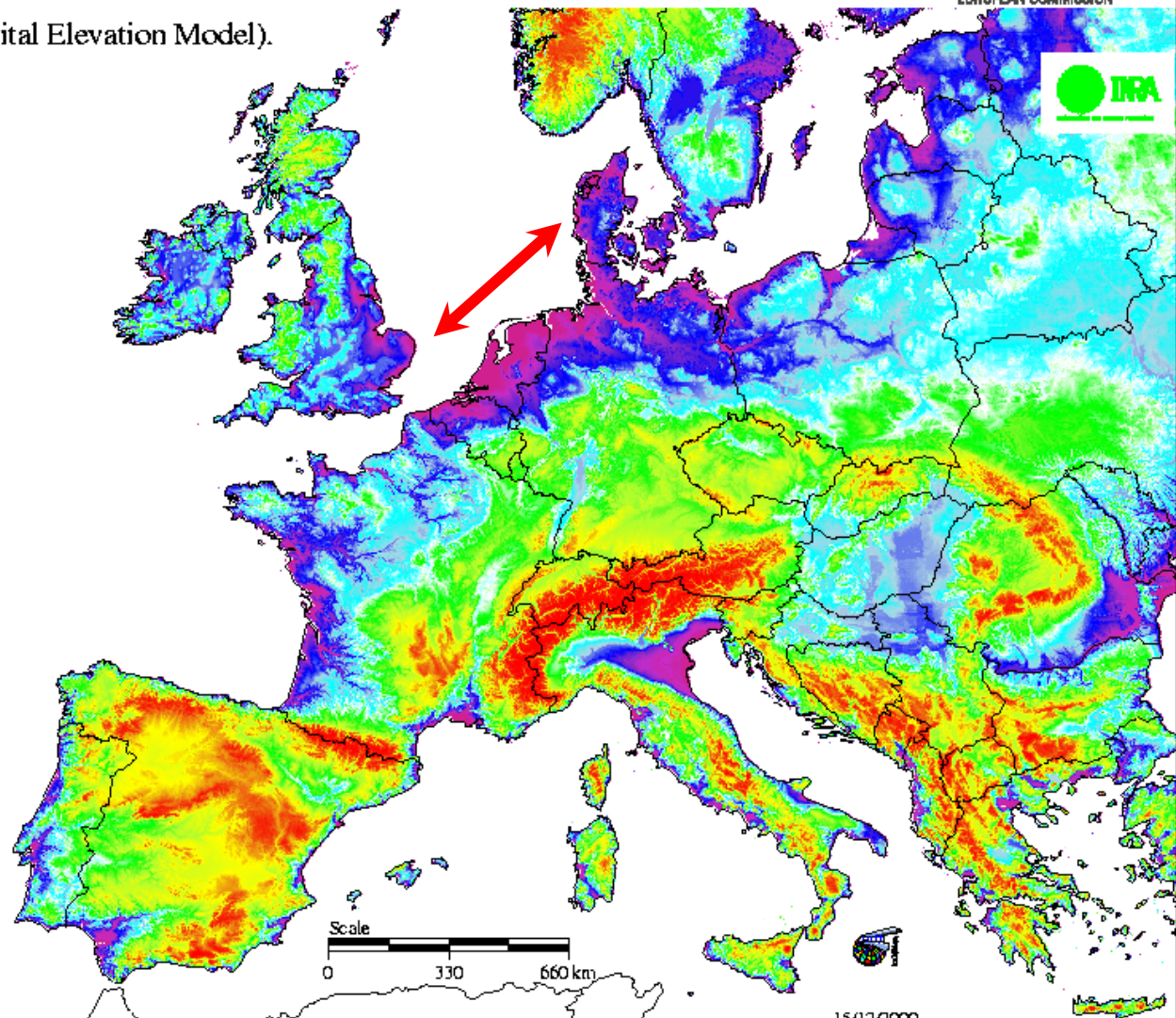
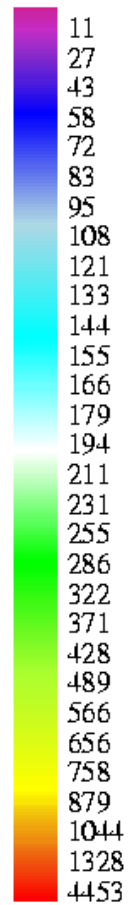
# East Anglia and Jutland

## ALTITUDES.

Source: USGS HYDRO1K

(1 km hydrologically correct Digital Elevation Model).

Meters:



Norwich 28. March 2015

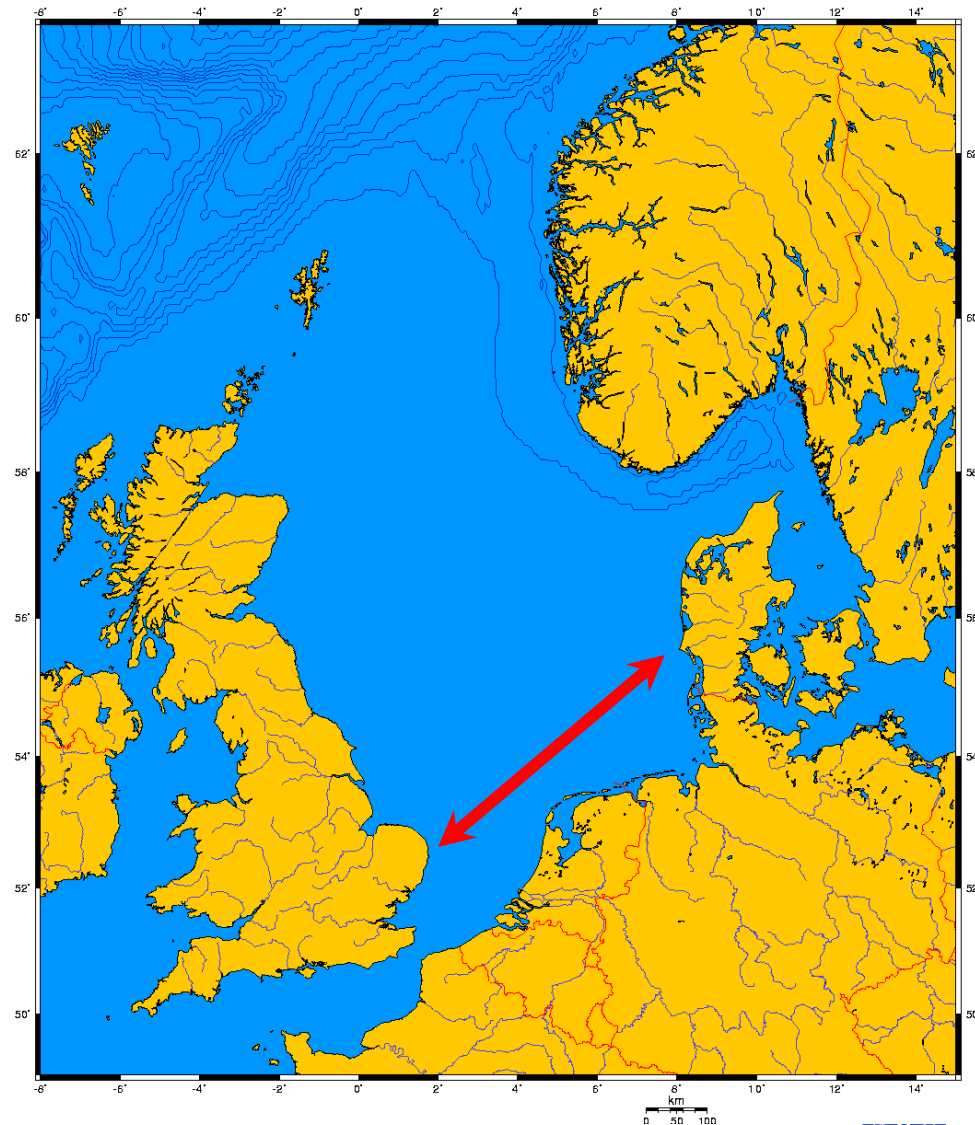
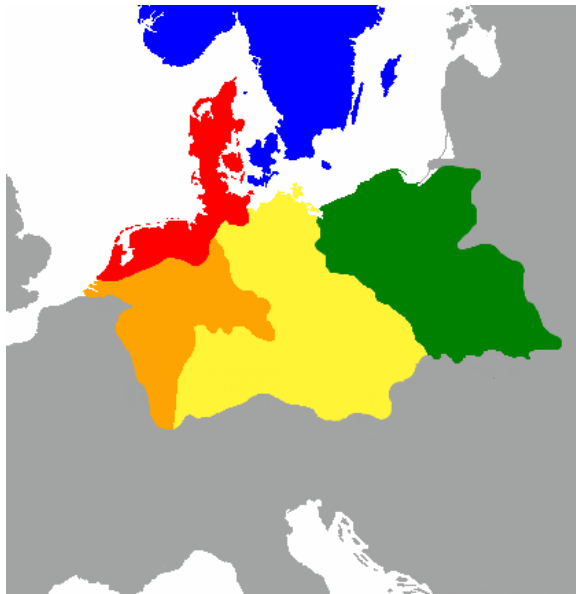
Dias 2

15/12/2000

# East Anglia and Jutland

## Contacts?

1. Common Germanic ancestry
2. *Ingvaemonic ancestry ??*
3. Angles, Saxons and Jutes in the 5.-7. centuries
4. The Scandinavian invasions in the 9.-10. centuries



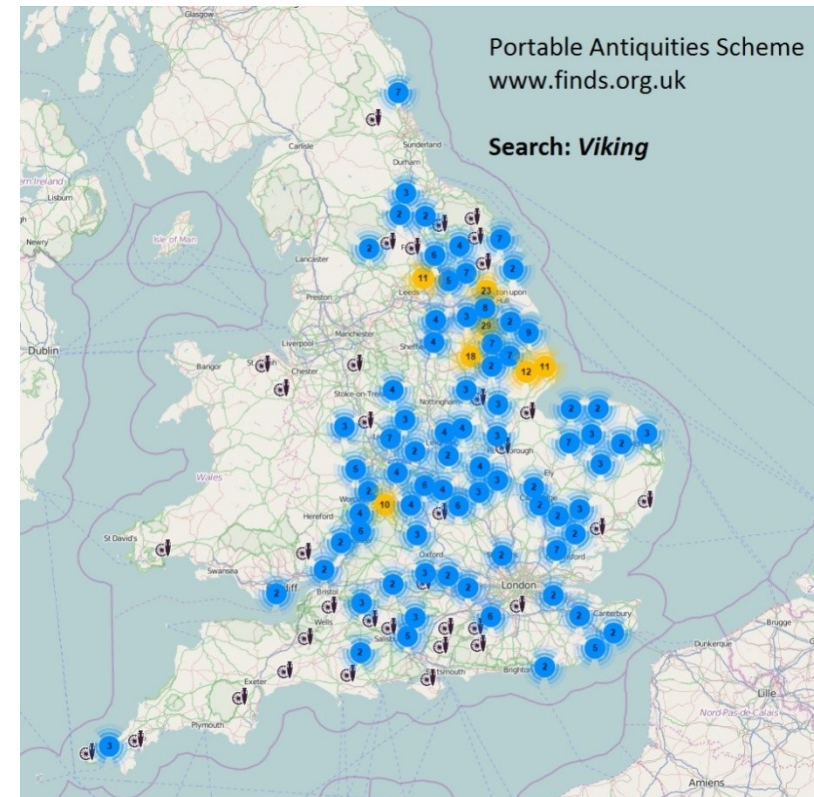
# East Anglia and Jutland

## Evidence for contact:

### 1. *Archaeology*

### 2. *History*

### 3. *Linguistic*



# East Anglia and Jutland

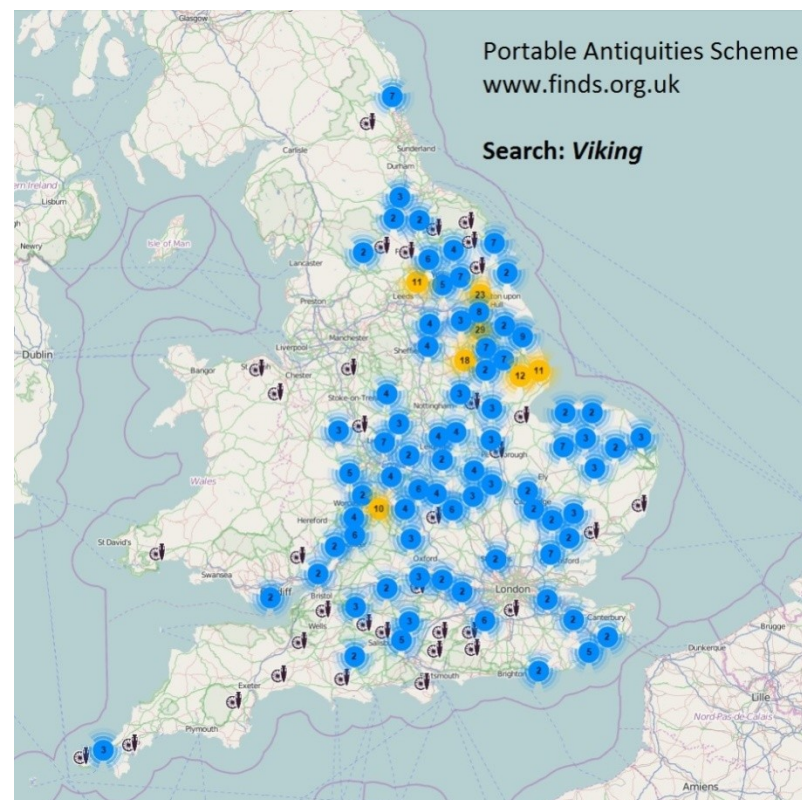
## Evidence for contact:

### 1. Archaeology

- Kentish bracteat found north of Varde, West Jutland
- 'Jutish Ladles' part of female grave goods in Kent
- Viking-Age ornamented stones in the Danelaw area
- Runic inscriptions in the Danelaw area
- Viking Age finds through metal detecting

### 2. History

- 'The Great Army' and settlement according to ASC
- Reign of King Canute
- English monks in Odense



# East Anglia and Jutland

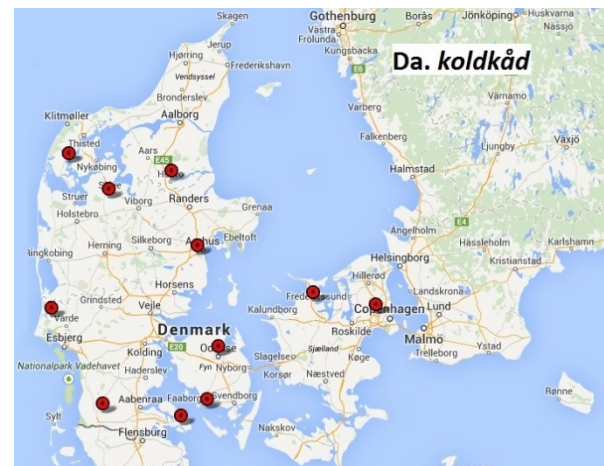
## Evidence for contact:

### 3. Linguistic

#### a. English > Danish

#### i. Reign of King Canute – 11. century

- Direct loans, eg.:
  - ODa *kirikæ* < OE *cirice*
  - ODa *rēkælse* < OE *rēcels* 'incense'
  - *Knud Lavard* < OE *hlāford* 'lord, master'
  - ODa *kaldækot* < OE *caldecot*
  
- Translation loans, e.g.:
  - ODa *lærthær* 'learned' < OE *gelæreð* 'wise, learned'
  - ODa *næsethyrel* 'nostril' < OE *nospyrel* 'nostril'
  
- Semantic loans, e.g.:
  - Jutish *dyr* 'red deer' < OE *dēor* 'red deer'
  
- Morphological loans, e.g.:
  - ODa *nōn*, n. '3 p.m.' < OE *nōn*, n. '3 p.m.'



# East Anglia and Jutland

## Evidence for contact:

### 3. Linguistic

a. English > Danish

ii. 19.-20. centuries

- Direct loans, e.g.:
  - Da *kiks* 'bisquit' < Eng. *cakes*
  - Da *Skipperlapskøvs* < Eng. *Lopscouse* 'stewed meet'
  - Da *computer* < Eng. *computer*
  - Da *f\*\*\*k* 'damn' < Eng. *f\*\*\*k* 'to copulate', 'damn'
  
- 'English' formations, e.g.:
  - Da *stationcar* ~ Eng. *Estate car* & *station waggon*
  - Da *black horse* ~ Eng. *dark horse*
  - Da *babylift* ~ Eng. *carrycot*



# East Anglia and Jutland

## Evidence for contact:

### 3. Linguistic

#### b. Danish > English

- i. Viking Age – 9.-11. centuries: Usually terms relating to ships, warfare, law and order, social classes and administration:
  - OE *cnearr* < ODa *knar* 'merchant ship', e.g.:
  - OE *orrest* 'battle, skirmish' < ODa *orest*
  - Eng. *law* < ODa *lag*, Da *lov* 'law'
  - OE *feolaga* 'fellow' < ODa *fēlagi* '(business) partner'
  - Eng. *Thrall* < ODa *thræl* 'slave, serf'



## East Anglia and Jutland

- **Do we see these periods of contact reflected between Jutland and East Anglia**
- **If so, can we distinguish between the different periods**

### **One thing to bear in mind:**

- Contact as reflected in name formation?, or
- Contact through linguistic loans?



# East Anglia and Jutland

## Jutish to East Anglian evidence

### East Anglia

- ME \***busk**, e.g. *le Busk*
- ME **hage** 'enclosure', e.g. *Aslakeshawe*
- ME \***hilderbush** 'elderbush', e.g. *Hilderbush Acre*
- ME \***ryde** 'clearance', e.g. *Hamundered*
- ME \***rydding** 'cleared area', e.g. *Redingeslond*
- ME \***sike** 'ditch', e.g. *Siik*
- OE \***skeið** 'border', e.g. *Skeygate*
- ME **scrubbe**, e.g. *Schrubland*

### Jutland

- Da *busk* 'bush' (CDa)
- Da *have* 'garden, enclosure' (CDa)
- Da *hyldebusk* (CDa, but 12 *Hyldebusk(ager)*, all in Jutland)
- Da *rød*, ODa *rythi* 'clearance' (CDa)
- ODa *rything* 'clearance' (CDa)  
*Rødding* (5 villages in Jutland)
- Jut *sig*, ODa *sīk* 'low, wet land' (Jut)  
c. 1000 names, all in Jutland!
- ODa *skēth* 'border' (prim. Jut)
- Jut *skrup* 'thicket, brushwood'

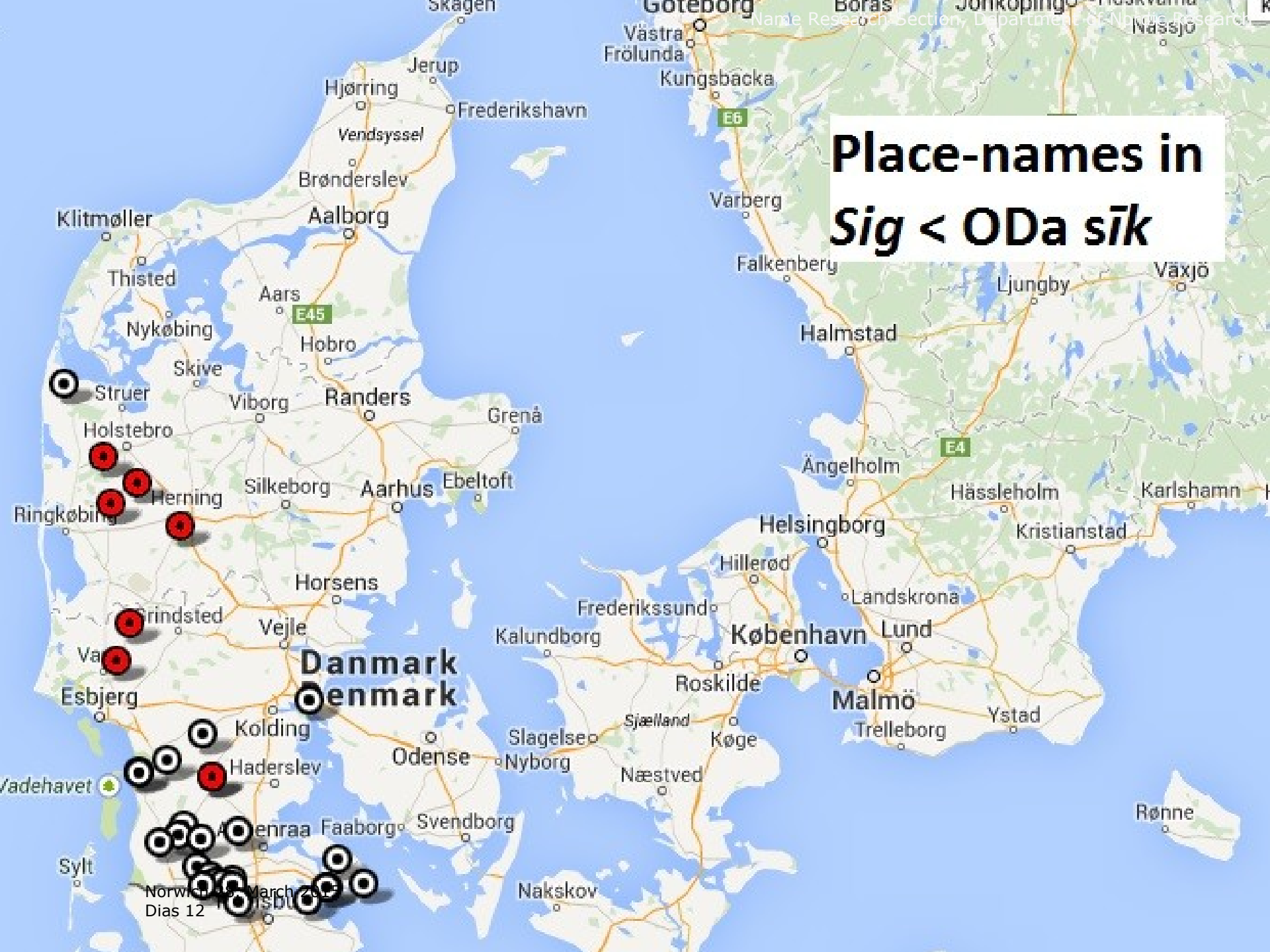


# Name element

## Da. *hyldebusk*



# Place-names in *Sig < ODa sīk*



# East Anglia and Jutland

## East Anglian to Jutish evidence

### Jutland

- ODa \***fifæl** 'fool, idiot',  
e.g. *Filsø* (3 ex in Jut)
- Jut \***funde** ?,  
e.g. *Funder*
- Da **hærvej**, 'highway',  
e.g. *Hærvejen*
- Jut \***klank** 'lump, hill',  
e.g. *Klank*
- Jut **klæg** 'heavy, sea-deposited  
clay', e.g. *Klægbanke*
- OJut \***lan** 'lane, road',  
e.g. *Børglum* (c. 1100)
- Jut **stræde** 'open road, row',  
e.g. *Stræ(de)gårde*

### East Anglia

- Eng. *fifel* 'monster' ?
- OE *funta* 'spring, stream' ??
- OE *hereweg* 'highway'
- OE *clacc* 'hill, peak' ??
- OE *clæg* 'clayey soil, clay'
- Eng. *lane*  
Burhlanis)
- Eng. *street* earlier 'open road'



# Name element *Jut klæg*



Danmark  
Denmark

Norwich 48, March 2015  
Dias 14

# East Anglia and Jutland

## Nature of the contact

- **Difficult to pinpoint, but seemingly related to the Viking Age contact phase**
- **An older common layer may be visible – Common Germanic or ?Ingvaemonic**
- **Mainly contact on the linguistic level – may be owing to the type of investigation**





Faculty of Humanities



# East Anglia and Jutland

– a comparative place-name study across the North Sea

Thank you for your attention!

